

# R454b Refrigerant

# SUBMITTAL DATA SHEET



Series Name: Xtreme Heat Pancake Series  
Model Number: MAPHE-H36B-2A/MO1SE-H36B-2A

## Air Handler Heat Pump System

Location:	Approval:
Engineer:	Date:
Submitted to:	Construction:
Submitted by:	Unit #:
Reference:	Drawing #:



## INDOOR SPECIFICATION

ESP(in.W.G)	0-0.8
Indoor Air Flow (Turbo/H/M/L/Si) (CFM)	1,189 / 1,083 / 971 / 865 / 865
Indoor Noise Level (Turbo/H/M/L/Si) (dBA)	59.5 / 59.5 / 57 / 48 / 48
Dimension (WxDxH)	inch 62-1/8 x 23-3/8 x 10-7/8
	mm 1578 x 593 x 278
Package (WxDxH)	inch 66-1/8 x 26-3/4 x 13-5/8
	mm 1680 x 680 x 345
Net/Gross Weight	lbs 143.3/156.75
	kg 64.8/71.1

## OUTDOOR SPECIFICATION

Compressor Type	TWIN-ROTARY
Compressor Model	EKPQ420D1UMUA
Refrigerant	R454B
Refrigerant Oil Charge(mL)	1460
Refrigerant Oil	VG75
Outdoor Air Flow (Max) (CFM)	3,002
Outdoor Noise Level (dBA)	65
Dimension (WxDxH)	inch 38-9/16 x 16-3/8 x 38-3/8
	mm 980 x 415 x 975
Package (WxDxH)	inch 45-1/16 x 19-11/16 x 42-1/2
	mm 1145 x 500 x 1080
Net/Gross Weight	lbs 204 / 235
	kg 92.6 / 106.7

## EFFICIENCY

Cooling		Heating	
SEER2	15.4	HSPF2-4	9.8
EER2	10.2	COP	3.3

## PERFORMANCE of Cooling

Cooling (Btu/hr)	
Rated Capacity	36,000
Min/Max Capacity	11,100~40,000
Moisture Removal(L/h)	3.26
Standard Operating Range(*F/*C)	-22~122(-30 ~ 50)
Rated Cooling Conditions:	Indoor: 80°F DB/67°F WB Outdoor: 95°F DB/75°F WB

## PERFORMANCE of Heating

Heating (Btu/hr)	
1. @ 47°F Rated	37,000
2. @ 47°F Min/Max Capacity	10,700~45,000
3. @ 17°F Rated	31,200
4. @ 5°F Rated: Capacity / COP	36,000/1.9
5. @ 5°F Max: Capacity	36,000
Standard Operating Range(*F/*C)	-22~75(-30 ~ 24)
1. Rated Heating Conditions:	Indoor: 70°F DB/60°F WB Outdoor: 47°F DB/43°F WB
2. Rated Heating Conditions:	Indoor: 70°F DB/60°F WB Outdoor: 17°F DB/15°F WB
3. Heating Conditions, Compressor Operating at Max. Frequency	Indoor: 70°F DB/60°F WB Outdoor: 5°F DB/5°F WB

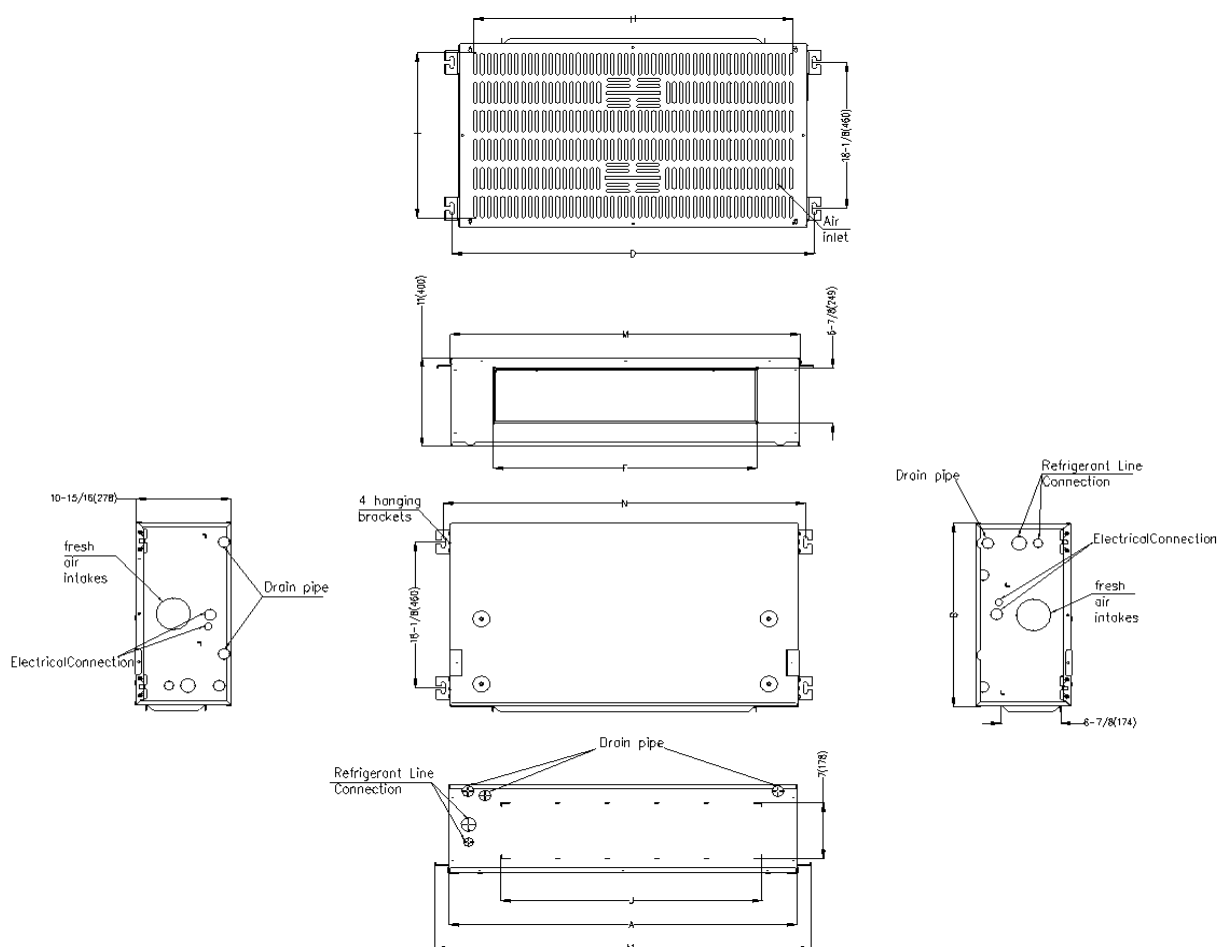
## ELECTRICAL

Indoor Power Supply	115/208/230,60Hz,1Ph
Indoor MCA 115V/(208/230V)	115V:8A; 208/230V:6A
Indoor MOP	15.0
Outdoor Power Supply	208/230,60Hz,1Ph
Outdoor MCA	29.0
Outdoor MOP	30.0
Communication Wiring	AWG 20/2
Compressor RLA	20.5
Outdoor Fan Motor RLA	2.4
Outdoor Fan Motor W	250
Indoor Fan Motor RLA	115V:6.4A 208/230V:4.5A
Indoor Fan Motor W	375
System Power Input @ Cooling (W)	3,529(800 ~ 4,350)
System Power Input @ Heating (W)	3,286(750 ~ 4,460)
MCA: Min. circuit amps (A)	MOCP: Max. over current protection (A)
RLA: Rated load amps (A)	W: Fan motor rated output (W)

## PIPING

Throttle type(Indoor)	EXV
Throttle type(Outdoor)	EXV
Liquid Size	3/8" (9.52mm)
Gas Size	3/4" (19mm)
Max. Piping Length(ft/m)	246(75)
Max. Height Difference(ft/m)	98(30)
Max. Pre-charged Length(ft/m)	25(7.5)
Refrigerant Pre-charged Amount(oz/kg)	127(3.6)
Additional Charge of Refrigerant((oz/ft)/(g/m)	0.7(65)
Connection Method	Flared

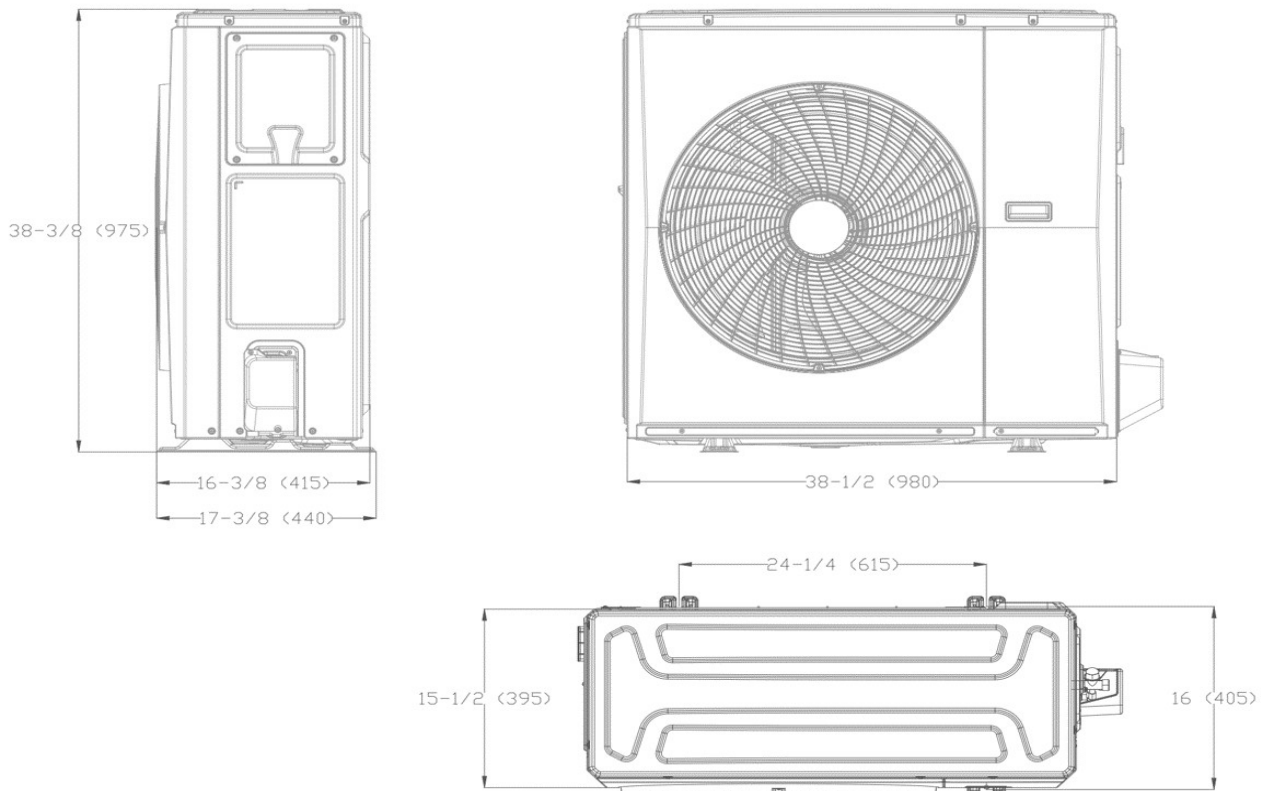
# Indoor Unit Dimension



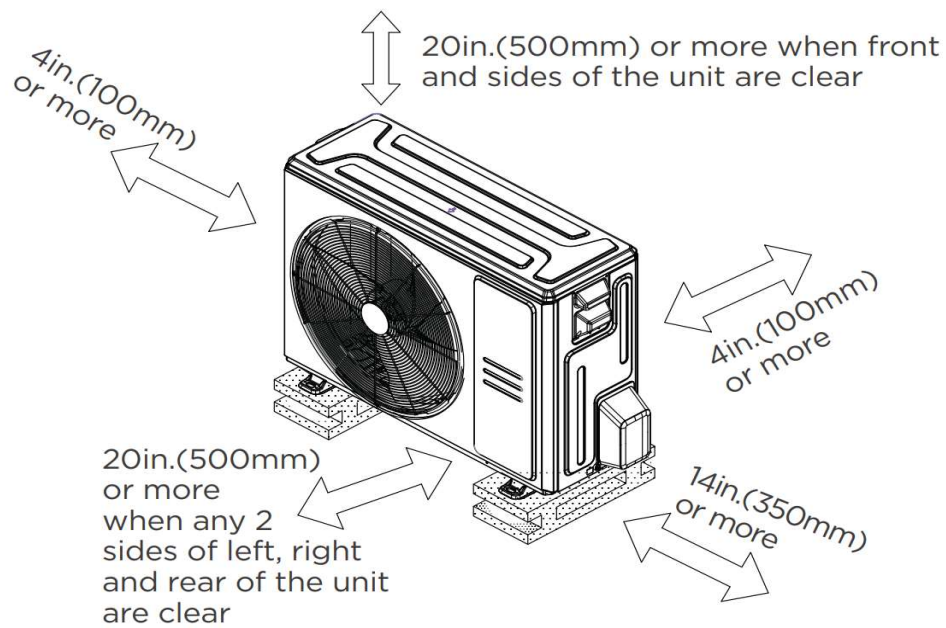
	18K		24K		30K		36K	
	inch	mm	inch	mm	inch	mm	inch	mm
A	39-15/16	1015	45-7/8	1165	51-15/16	1320	58-7/8	1495
A1	43-1/4	1098	49-1/8	1248	55-1/4	1403	62-1/8	1578
J	30	761	35-7/8	911	41-15/16	1066	48-7/8	1241
D	41-5/8	1057	47-1/2	1207	53-5/8	1362	60-1/2	1537
F	30-1/4	769	36-3/16	919	42-5/16	1074	49-3/16	1249
H	36-5/8	930	39-3/4	1010	47-5/8	1210	53-15/16	1370
M	40-3/16	1020	46-1/16	1170	52-3/16	1325	59-1/16	1500
N	41-5/8	1057	40-7/16	1027	53-5/8	1362	60 1/2	1537

## Outdoor Unit Dimension

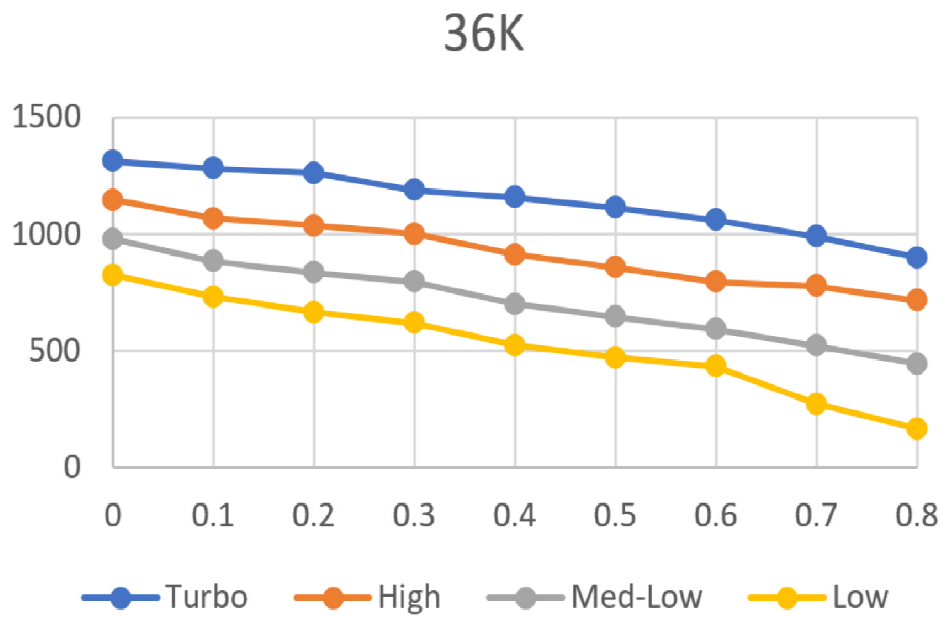
Unit:inch(mm)



## Installation Instruction For Outdoor Unit



#### Fan Performance For Indoor Unit



#### Features

- Downward or backward (optional) air inlet
- Aluminum Coil
- The IDU supports 115/230V voltage compatibility
- Constant Air Flow system: Up to 0.80 In.W.C.
- Optional Auxiliary heat kit up to 10kW
- Easy Maintenance
- Multiple control options available:
  - Two-way communication wired controller with built-in Wi-Fi: 120N (X6W)
  - Wireless remote controller
  - Third-Party 24V Thermostat
- Adaptive control systems with 24V and RS485 communication
- High efficiency up to 17.5 SEER2, 12 EER2, 10.5 HSPF2
- Base pan heater and crankcase heater are equipped as standard